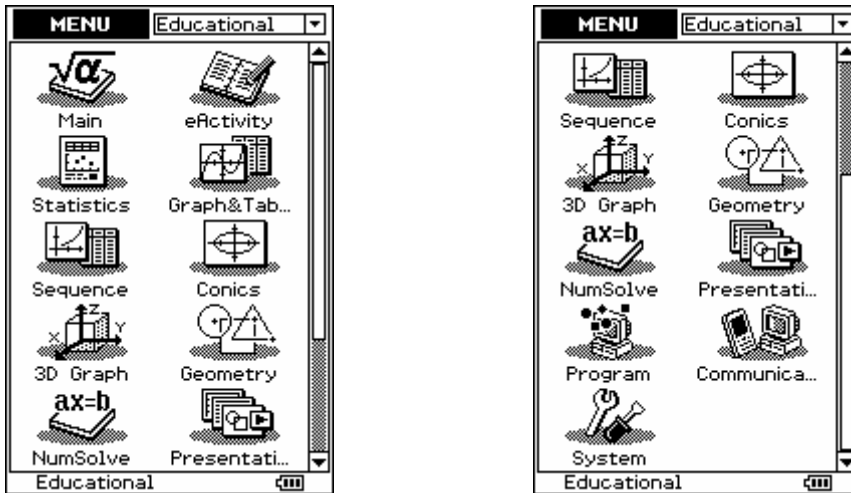
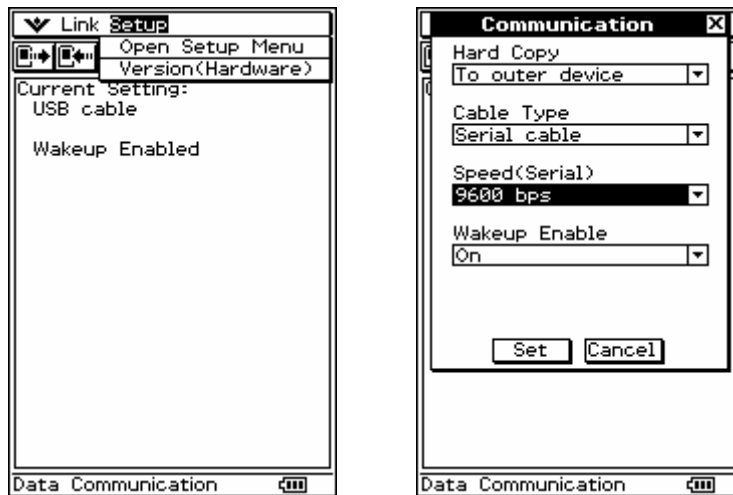


# Setting CAS up and rearing to go!

Main Menu

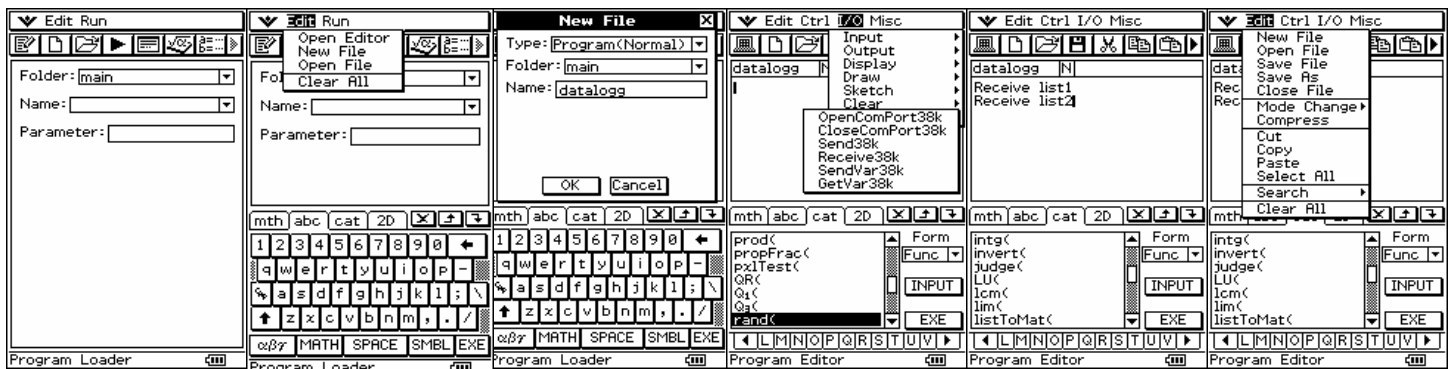


For connecting to Data logger



To receive data form the Data-logger, a small program needs to be written

- List 1 is the time
- List 2 is the real data collected



Connect the Data-logger to the ClassPad 300 and execute the program 'datalogg', this will extract the data from the Data-logger and place it into List1 and 2 in the **Statistics** icon.

Enter into the **Statistics** icon, set up the statistical graph to be a scattergraph and then draw.

	list1	list2	list3
1	0	36	
2	1	35.111	
3	2	34.244	
4	3	33.398	
5	4	32.574	
6	5	31.769	
7	6	30.985	
8	7	30.22	
9	8	29.474	
10	9	28.746	
11	10	28.036	
12	11	27.344	
13	12	26.669	
14	13	26.01	
15	14	25.368	
16	15	24.742	

Cal> [ 1]=0

	list
1	0
2	1
3	2
4	3
5	4
6	5
7	6
8	7
9	8
10	9
11	10
12	11
13	12
14	13
15	14
16	15

Cal> [ 1]=0

**Set StatGraphs**

StatGraph1 StatGraph2

Draw:  On  Off

Type: Scatter

XList: list1

YList: list2

Freq: 1

Mark: cross

Set Cancel

16 15 24.742

Cal> [ 1]=0

Finding an appropriate mathematical model.

