

Graphing and the maximum or minimum point.

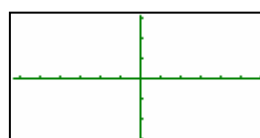
This resource was written by Derek Smith with the support of CASIO New Zealand. It may be freely distributed but remains the intellectual property of the author and CASIO.

Select GRAPH mode from the main menu by using the arrow keys to highlight the GRAPH icon or pressing 5.



Finding the maximum or minimum point of a graph, where $f'(x) = 0$ [or $dy/dx = 0$ or $y' = 0$]

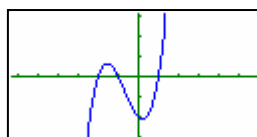
Make sure that the V-window is set up to see the graph efficiently



Example 1: Graph $y = (x + 1)(x + 2)(x - 1)$

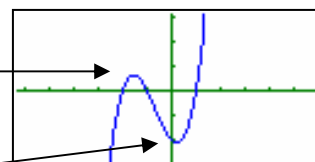


F6 or EXE
to draw

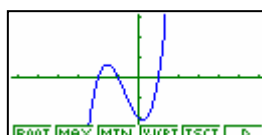


The maximum point

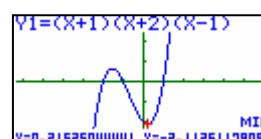
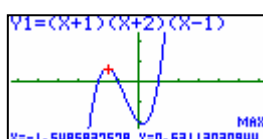
The minimum point



Press **SHIFT** **F5** for **G-Solv** (finds maximum point and the minimum point)



Then **F2** for **MAX** (maximum) or **F3** for **MIN** (minimum)



For further tips, more helpful information and software support visit our website
www.monacocorp.co.nz/casio