

Multiple representations for the derivative.

This resource was written by Derek Smith with the support of CASIO New Zealand. It may be freely distributed but remains the intellectual property of the author and CASIO.

Select one of the three icons shown, RUN, GRAPH or TABLE mode from the main menu by using the arrow keys to highlight the icon required.



Icon # 1

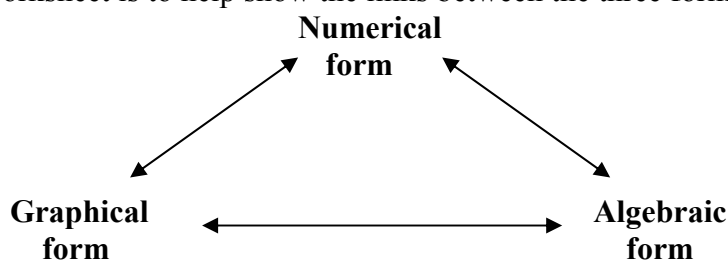


Icon # 5



Icon # 7 for quick entry.

This worksheet is to help show the links between the three forms of mathematics.



- Do it numerically, view it graphically,
- Do it numerically, view it algebraically,
- Do it graphically, view it algebraically,
- Do it algebraically, view it graphically,
- Do it algebraically, view it numerically.

The derivative is a mathematical interpretation of the gradient (slope) at a point on a line of curve.

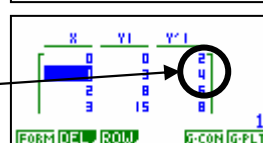
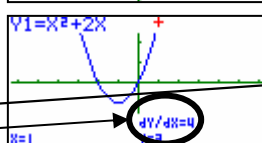
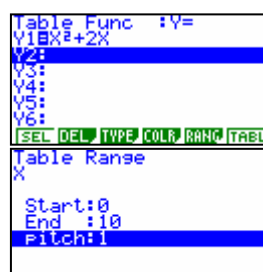
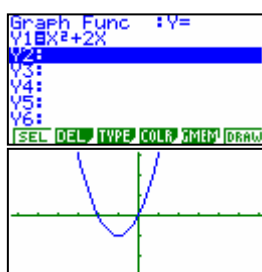
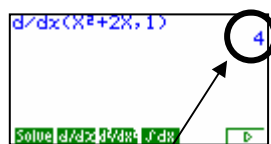
Example: Find the slope of the tangent on the curve $y = x^2 + 2x$ at the point (1,3).

Answer: Select the icon you want to work in.

Run
OPTN **F4**
 Then type in the expression.

Graph
 Type in the equation, **F6** then **SHIFT** **F1**

Table
 Type in the equation, **F5** for the RANGE setup, then **F6**



Gradient = 4