

# Loading Downloaded eActivities

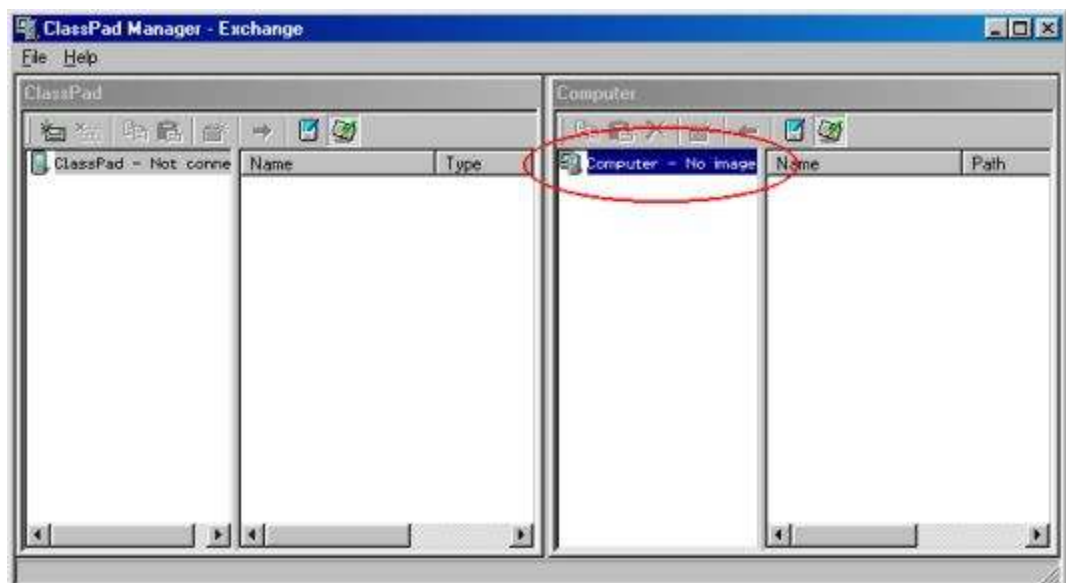
Loading downloaded eActivities to the ClassPad requires two basic steps: loading the eActivity into the ClassPad Manager and transferring the eActivity to the ClassPad.

## I. Loading the eActivity into the ClassPad Manager

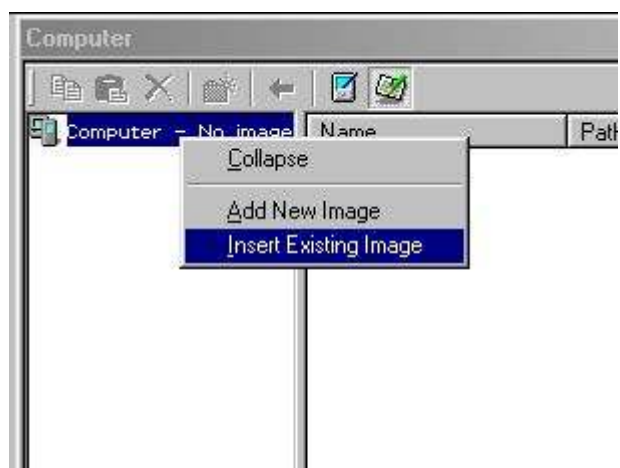
1. Open the ClassPad Manager
2. Right Click on the ClassPad Manager to bring up the pop up menu. Select Exchange Window.



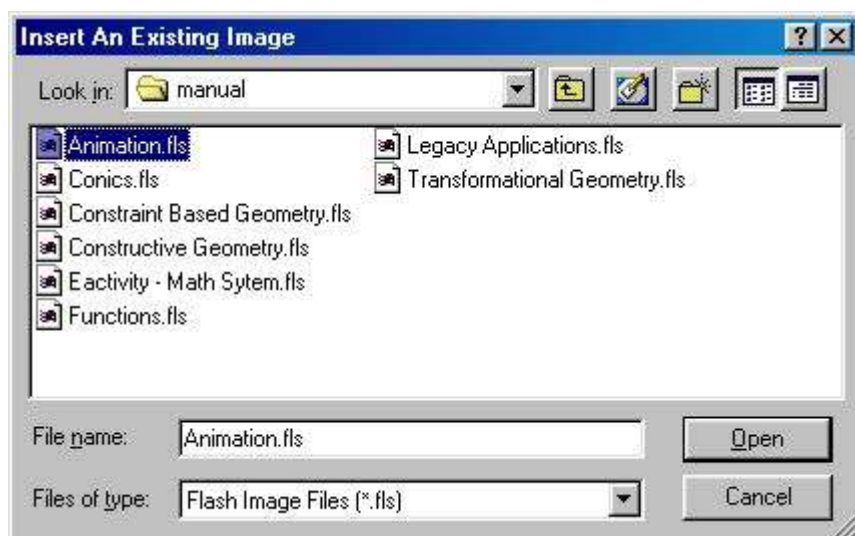
3. The Exchange window has two Explorer windows. One for the ClassPad on the left and one for the ClassPad Manager on the right. Look at the explorer on the right. Locate the icon labeled computer.



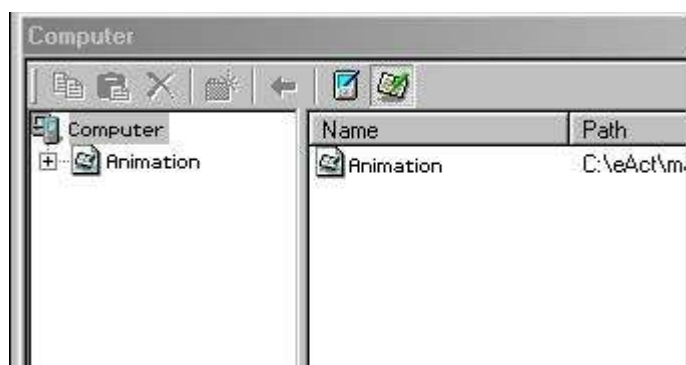
Right click on the computer icon and select Insert Existing Image.



4. This will bring up a file browser window. Find the .fls file that you just downloaded, select it and click on open.



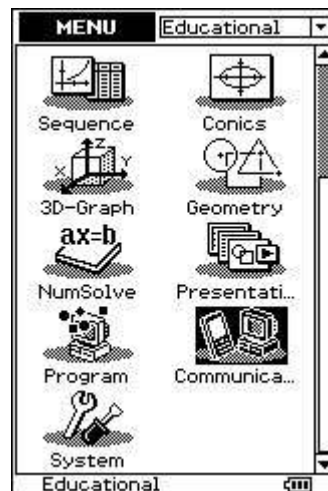
5. The downloaded eActivity has been added underneath the Computer icon.



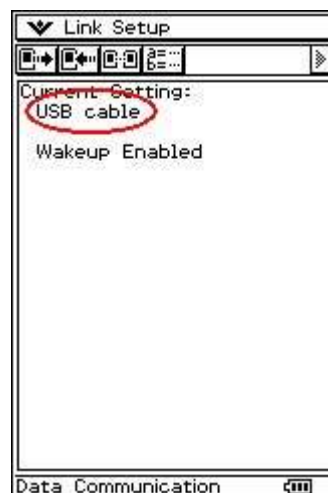
## II. Transferring the eActivity to the ClassPad

1. Turn on the ClassPad. Plug the USB cable into your computer then into your ClassPad.

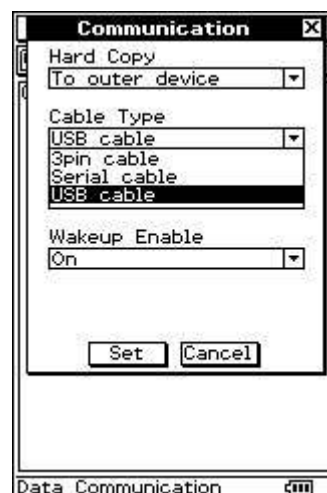
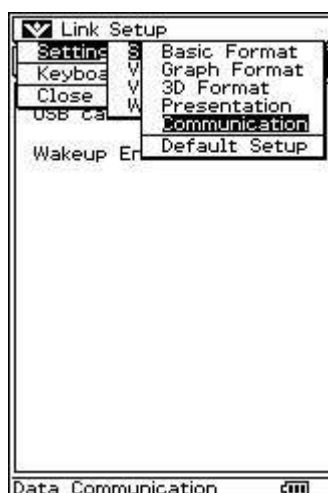
2. (a) The ClassPad should automatically start waiting for communication from the ClassPad Manager. If it does not: Go to the main menu, scroll down and open Communication.



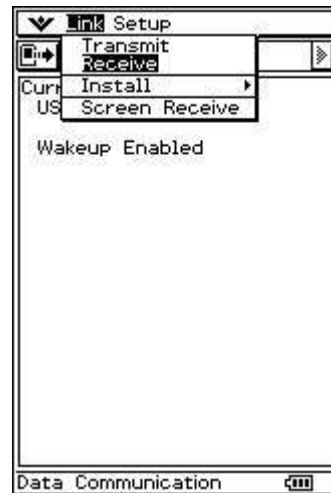
(b) Make sure the Current Setting is USB cable.



(c) If it is not, tap on the hard icon Settings, then Setup, then Communication to change it.

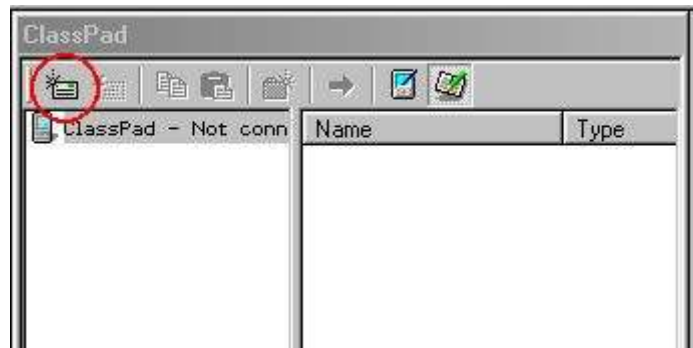


(d) Tap the Link Menu and choose Receive.

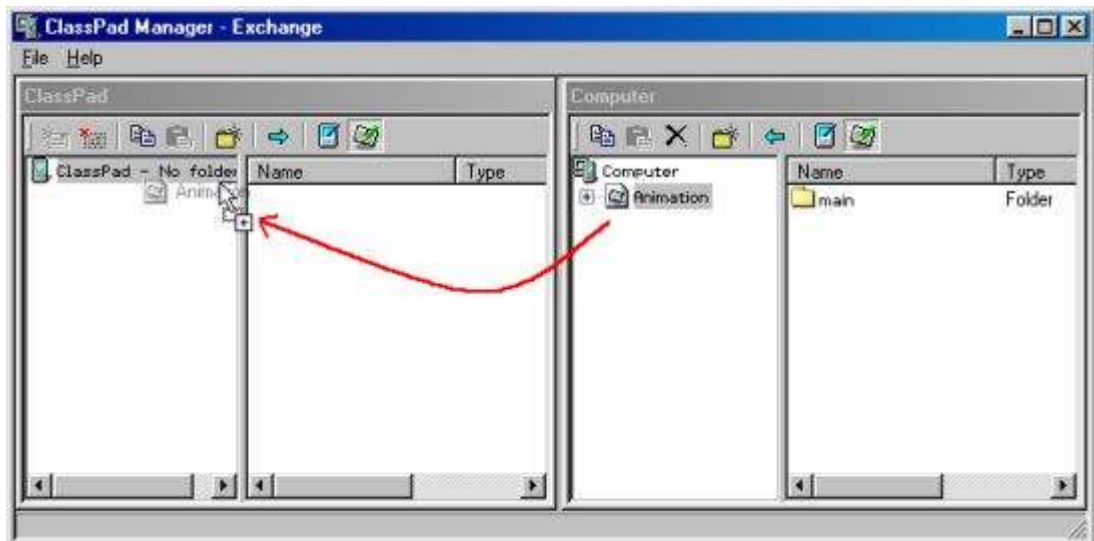


(e) The ClassPad is now waiting for you to transfer eActivity files.

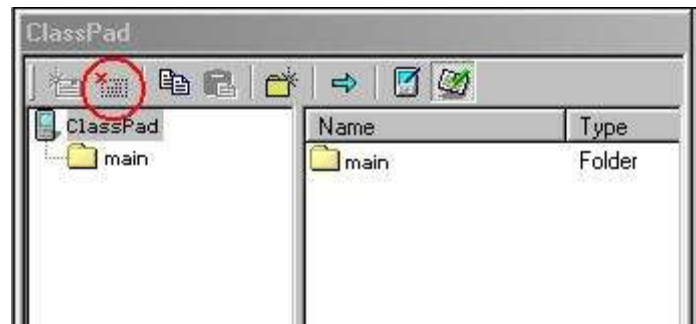
3. Go back to the ClassPad Manager. The ClassPad is ready to receive files, but the ClassPad Manager is not ready to send them. Look in the ClassPad explorer on the left and click on the first icon in the ClassPad window's toolbar. This will connect the ClassPad Manager to the ClassPad.



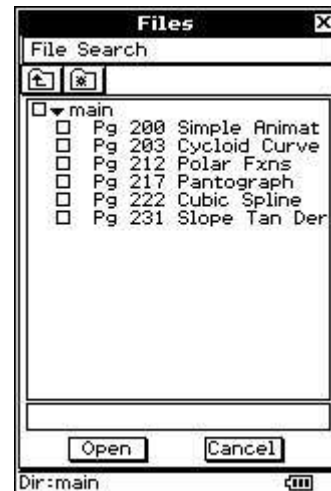
4. Now simply drag the eActivity from the ClassPad Manager explorer to the ClassPad icon in the ClassPad Explorer.



- Click on the disconnect button on the ClassPad Explorer's toolbar (2nd button in the toolbar from the left) to disconnect the ClassPad Manager.



- On the ClassPad, the connection will have automatically ended. Return to the main menu and tap eActivity. Tap File then Open and the downloaded eActivities will be in the main directory.



- Highlight the file that you want to open. Then tap open at the bottom of the screen.

