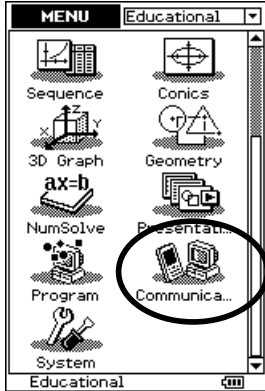


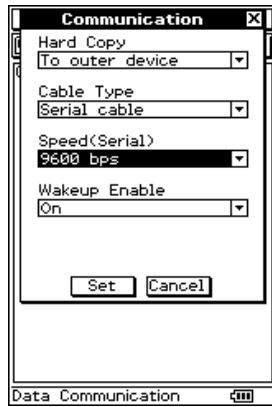
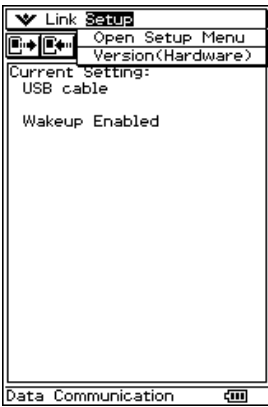
Basic Data collection on the ClassPad 300+.

This resource was written by Derek Smith with the support of CASIO New Zealand. It may be freely distributed but remains the intellectual property of the author and CASIO.

From the Main Menu...enter the Communication icon

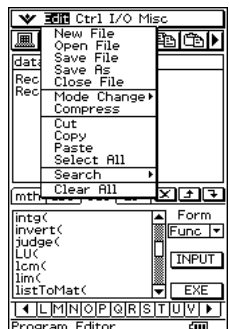
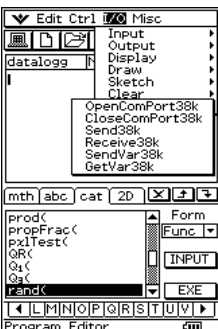
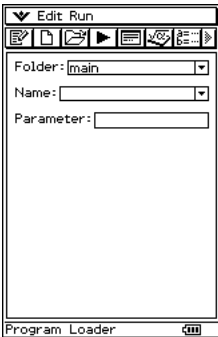


For connecting to Data logger



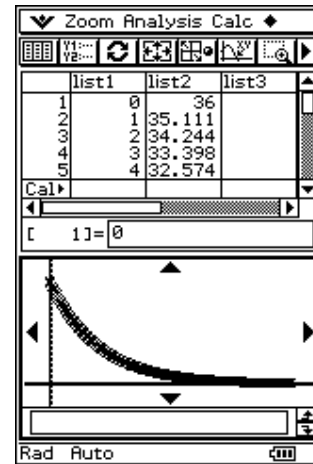
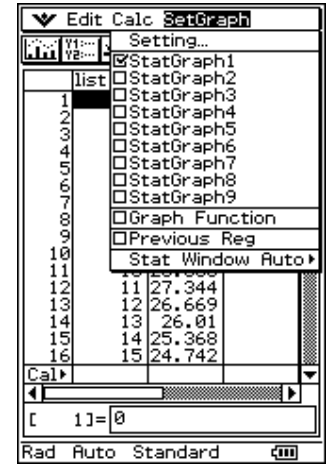
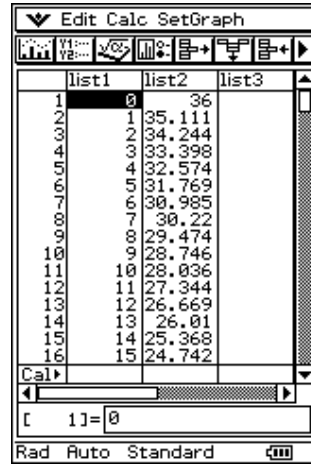
To receive data from the Data-logger, a small program needs to be written

- List 1 is the time
- List 2 is the real data collected



Connect the Data-logger to the ClassPad 300 + and execute the program 'datalogg', this will extract the data from the Data-logger and place the data collected into List 1 and List 2 in the **Statistics** area.

Enter into the **Statistics** icon, set up the statistical graph to be a scattergraph and then draw.



Experiment in finding an appropriate mathematical model.

For further tips, more helpful information and software support visit our website

www.monacocorp.co.nz/casio